



NAPCO[®]

333 Bayview Avenue
Amityville, New York 11701
For Sales and Repairs, (800) 645-9445
For Technical Service, (800) 645-9440

WIZARD[™] IIe

(Voice Phone Module for Napco Gemini[™] Series, Signature SS-P Series and Napco Express Series Control Panels) **INSTALLATION INSTRUCTIONS**



© Napco 1998

WI945 4/98

DESCRIPTION

Napco's Wizard IIe is a voice-synthesized interface that provides keypad features from any TouchTone[™] telephone, either on or off premises. Voice prompts replace keypad displays and annunciators to guide the user through the various functions using the phone's numerical touchpad. Hookup to the keypad bus and telephone lines is quick and easy.

Note: The Wizard IIe is not intended as a replacement for a keypad, but rather as an enhancement to a keypad-based system for remote or local access.

FEATURES

- Access/command system from any TouchTone phone
- Voice prompted for user-friendly operation
- Smart, menu-driven "YES/NO" format
- Over 250 voice-synthesized descriptors
- 3 programmable control outputs for home automation
- Toll Saver feature avoids unnecessary phone charges
- Uncompromised security using ID and access codes in addition to existing system codes
- May be used as a Stand-alone Telephone Controller when used with a 12V Power Supply
- Easy Installation

SPECIFICATIONS

Operating Voltage: 12Vdc (nominal), supplied by panel

Current: Standby, 60mA + control output currents; Local Active, 120mA + control output currents; Remote Active, 110mA + control output currents (typical)

Control Outputs (CNTRL 1, CNTRL 2, CNTRL 3): 12Vdc, active low, 25mA maximum

Dimensions: 1³/₈"H x 7"W x 3¹/₄"D

Telephones: TouchTone-compatible. (Phones that can only dial rotary will not be able to operate the host panel.)

INSTALLATION

The module is self contained to simplify mounting inside or outside the panel enclosure. If mounting inside the enclosure, the unit may be affixed to the rear wall using double-sided adhesive pads. If mounting outside the enclosure, use two #10 screws to secure the unit to any flat surface.

WIRING

Wiring to the Gemini, Signature SS-P and Napco Express Series Control Panels is summarized in Table 1.

LINE SEIZE TERMINAL (Terminal 1)

The Line Seize Terminal may be used as an input which will notify the user whenever the control panel or any other telephone accessory, such as a Veriphone 2-way voice module, is in an off-hook state. Any active low output that goes to a low state (<1V) when active can be used to drive the Line Seize Terminal.

The message, "Alarm system communicating. Please try again later, or enter Wizard ID number followed by pound" will activate. Entering the Wizard IIe ID number and pressing [#] will allow the user to operate the system.

CONTROL TERMINALS (CNTRL 1, 2, 3) (Terminals 7, 8 & 9)

The CNTRL Terminals are active low; that is, they will go to about 1 volt when active (on). With no output device connected, a voltmeter placed across the PGM Terminal and Remote Power (-), will read 0 volts. When troubleshooting the CNTRL outputs (with no device connected) connect the positive (+) voltmeter lead to Remote Power (+) and the negative (-) lead to the CNTRL Terminal. If the meter reads 0 volts, the CNTRL Terminal is off. If it reads approximately 12 volts, the CNTRL Terminal is on.

The CNTRL Terminals cannot drive devices that require much current. Applications exceeding 25mA will require an external low-current relay (Napco RB1000 or equivalent, optional). See Wiring Diagram for connection.

TELEPHONE CONNECTIONS (Terminals 10-14)

The Wizard IIe will accommodate an answering machine at the site. It is recommended that the answering machine's recorded message start with "Please wait..." followed by a 4-second pause before the normal opening message begins. This will notify callers that a message will follow and allow sufficient time to enter the Wizard IIe access code during the pause without audio interference.

Refer to the Wiring Diagram for telephone connection to the control panel and RJ31X. Typically, wiring is made to the PHONES terminals at the RJ31X terminal block. In this configuration, the phone is in parallel with the Wizard IIe and a remote communication may be detected by anyone in the house who picks up the phone. The advantage of this method is that the phone will always be able to access the Wizard IIe for an emergency, even during a remote access, however if an answering machine is in the system, it will record the interactions between the user and the Wizard IIe.

For those users who do not want Wizard IIe communications to be recorded, the system answering machine may be connected to a separate RJ31X terminal block. Using this scheme, the Wizard IIe will automatically disconnect the answering machine on a remote communication as soon as the Wizard IIe ID number is entered. These terminals could be used for any or all phones in the house, however any phone wired in this manner will appear to be disconnected for the duration of the remote communication.

In very rare cases, telephone wiring as shown may result in no touch tones when attempting to access the Wizard IIe from a local phone. Should this occur, reverse the Wizard IIe's tip and ring connections at Terminals 10 & 11 and also at Terminals 12 & 13 (Terminals 13 & 14 if answering override is used; see *Wiring Diagram*).

GENERAL OPERATION

The Wizard IIe may be accessed from either a local phone or a remote phone. When calling from outside, first dial the phone number and wait for pickup. Thereafter, operation with a local or remote phone is identical.

1a. (From outside phone only.) Dial the phone number.

☞ The Wizard IIe will pick up three rings after the programmed number of rings (see Toll Saver feature) and greet you with, "Hello".

☞ Enter your Wizard IIe ID Code, then press **#**.
(Note: If an answering machine picks up, enter your code during a pause in the opening message.)

☞ The Wizard IIe will respond with, "(System Status: Announce Current Status)".

☞ When prompted, enter the area number, then press **#**.

1b. (From local phone only.) Enter your Wizard IIe ID Code, then press **#**.

☞ The Wizard IIe will greet you with, "(System Status: Announce Current Status)". (Note: If an attempt is made to access the Wizard2e while the system is in the process of reporting, the Wizard IIe will respond with, "Alarm system is communicating. Please try again later or enter Wizard IIe entry number, followed by pound"). Entering the Wizard IIe ID Code at this time will allow the user to operate the panel.

☞ When prompted, enter the area number, then press **#**.

2. If an Access Code is requested, enter your Access Code, then press **#**. (Not all systems will require a programmable Access Code.) The status of the panel will be given.

3. When the Disarm Code is requested, enter a system Arm/Disarm Code, then press **#**.

You will then be asked questions concerning checking or changing system status, checking system troubles, etc. (See Condensed Flow Chart and the User's Guide for reference.) The use of voice prompts makes further operation straightforward and self-explanatory. In replying to voice prompts, however keep in mind the following points.

- After entering any code, you must press **#**.
- To reply to a question, press **#** for YES or ***** for NO.
- From a local phone, any time after the Wizard IIe is accessed:
 - ☞ Press **0 0 1 #** to execute a panic alarm (if enabled).
 - ☞ Press **0 0 2 #** to execute an emergency alarm (if enabled).
 - ☞ Press **0 0 3 #** to execute a fire alarm (if enabled).
- Pressing the "star" button *twice* (***** *****) *in rapid succession at any time* will terminate the sequence and restart from the Current Status annunciation (see Condensed Flow Chart).
- You need not wait for the end of a prompt to enter a reply, however *be sure you understand the question as pressing # will execute it*.
- If no activity is detected within 15 seconds, the Wizard IIe will repeat the prompt; after 30 seconds of inactivity, the Wizard IIe will say "Goodbye" and hang up.

TOLL SAVER

The Wizard IIe normally picks up the phone three rings after the programmed number of rings (see Programming Worksheet:

Limit 1). Any change in the status of the panel (except arming) will cause the Wizard IIe to pick up on the programmed number of rings.

Thus, user may call as often as necessary. If the phone continues to ring beyond the programmed number, he can hang up, knowing that the status of the panel has not changed since the last call, and thereby avoid unnecessary phone charges.

TELEPHONE COMPANY ANSWERING MACHINE OVERRIDE

To access the Wizard IIe remotely in cases where the residence has the Telephone Company Answering System, the Wizard IIe incorporates a Second Ring Access feature.

In order to access the Wizard using this feature, the customer must call the Wizard IIe, listen for one ring, then hang up and redial. The Wizard IIe will then pick up on the first ring, say "Hello", and wait for the Wizard ID Code to be entered. This second ring must occur at between 7 seconds and 20 seconds after the first ring.

STAND-ALONE TELEPHONE CONTROLLER

The Wizard IIe may be used as a Stand-alone Telephone Controller. Without using a Napco Alarm Panel the Wizard IIe may still be used as a telephone controller to turn on and off Control Outputs 1, 2 and 3 through a touch-tone phone using the wizard, a voice prompt format and descriptions of outputs as programmed.

To activate, at local phone press **5 5 #**, Wizard IIe will give control 1 status. Enter **9 9 9 #**, Wizard IIe will enter the program mode. Use the programming record sheet to change the Wizard ID Code, Wizard Access Code (if desired), Program code and Control Output Descriptions.

PANIC ACTIVATION FROM HOME

A Panic Condition can be activated by pressing **0 0 1 #**, **0 0 2 #** or **0 0 3 #** at anytime in the Wizard IIe sequence will activate a Keypad Panic, Keypad Auxiliary and/or Keypad Fire, respectively if the following conditions are met:

- The panels GEM-P9600,3200,1632 must have the keypad and areas the wizard is assigned to programmed to accept the associated keypad panics.
- The panels XP400/600, GEM-P800/400 must have associated keypad panics enabled.

PROGRAMMING

The Wizard **IIe** is programmed at the telephone touchpad, locally or remotely, for system parameters, codes, and voice descriptions for zones and control outputs. Complete the Programming Worksheets that follow before attempting to program the unit.

The control panel should have all Burglary Zones programmed for Selective Bypass. In addition, the following panel programming is required:

- Enable Manager's Mode (if multiple areas are used in) (GEM-P1632, GEM-P1632 and GEM-P9600 only)
- Disable Code Required for Function Mode Level 1
- Disable Code Required for Easy Bypass

Note: Do not program Disable Auto Status

WIZARD KEYPAD ADDRESS (Gemini Series Only)

Inasmuch as the Wizard **IIe** is essentially functioning as a remote keypad, it must be assigned a two-digit Keypad Address just as any other keypad. (See following Programming Worksheets: Limit 6.) No other keypad may be assigned this number.

Similarly, the control panel must be programmed for the Wizard **IIe**'s area assignments (Keypad Area Assignments) and applicable features (Keypad Features). Refer to the Programming Workbook for the panel in use.

Note: If assigned Keypad Address "01", the Wizard **IIe** will provide the ability to change user codes from any TouchTone phone, however this will also prevent the user or dealer from accessing the Program Mode from a keypad in the future.

Entering the Program Mode

Enter the Program Mode as follows from any TouchTone phone. **Note:** The Program Mode may be accessed directly by entering **9 9 9 #** within the first 2 minutes after power-up. (Also see TROUBLESHOOTING: Error 1.)

1. Enter your Wizard **IIe** ID code, then press **#**. The default code is "55", but this number must be reprogrammed. The Wizard2e will answer, "Hello".

2. Enter your Access Code (if programmed) then press **#**. The default Access Code is "000000" (disabled). The status of the panel will be given. (Press ***** to continue or **#** to repeat.) **Note:** If all zeros are programmed, the Access Code will be suppressed and it will not be requested; proceed to Step 3.

3. The Wizard **IIe** will direct you to, "Enter your Disarm Code, followed by a pound." At this point, enter your Program Code, followed by a **#**. The default Program Code is "999".

4. The Wizard **IIe** will ask if you want to load the default program. Press **#** for Yes or ***** for No. **Note:** If the default program is loaded, it will overwrite any existing data, including all control and zone descriptions.

5. When prompted to enter the next command line, enter the data from the Programming Worksheet; that is, enter printed stars and digits, then your data, then press **#**.

Example: To program a Wizard **IIe** ID Code (Code 1) of 1,2,3,4, enter *** 1 1 * 1 2 3 4 #**.

Note: In the Program Mode, pressing the **#** memorizes the code. Pressing **#** twice in succession memorizes the code and reads it back for confirmation. Refer to the Programming Worksheet for other details.

TROUBLESHOOTING

The message, "Voice module trouble; call for service, Error N" indicates a system error wherein N represents one of the following error codes.

Error 1. Data error in programmed code, system parameter or option. **Note:** If, upon pickup, the Wizard responds with, "Voice module trouble; call for service, Error 1", you may press **9 9 9 #** to enter the Program Mode directly. Otherwise, the Wizard **IIe** will hang up and restore normal telephone service.

Error 2. Data error in zone or control-output description.

KEYPAD BUS	CONTROL PANEL TERMINALS		Wizard IIe TERMINALS
	GEM-P1632, GEM-P3200, GEM-P9600	XP-400, XP-600 GEM-P400, GEM-P800	
RED (+)	9	12	2
BLACK (-)	10	13	3
GREEN (RX)	11	14	4
YELLOW (TX)	12	Not Used	5

Table 1

DESCRIPTOR LIBRARY (See Programming Worksheets)

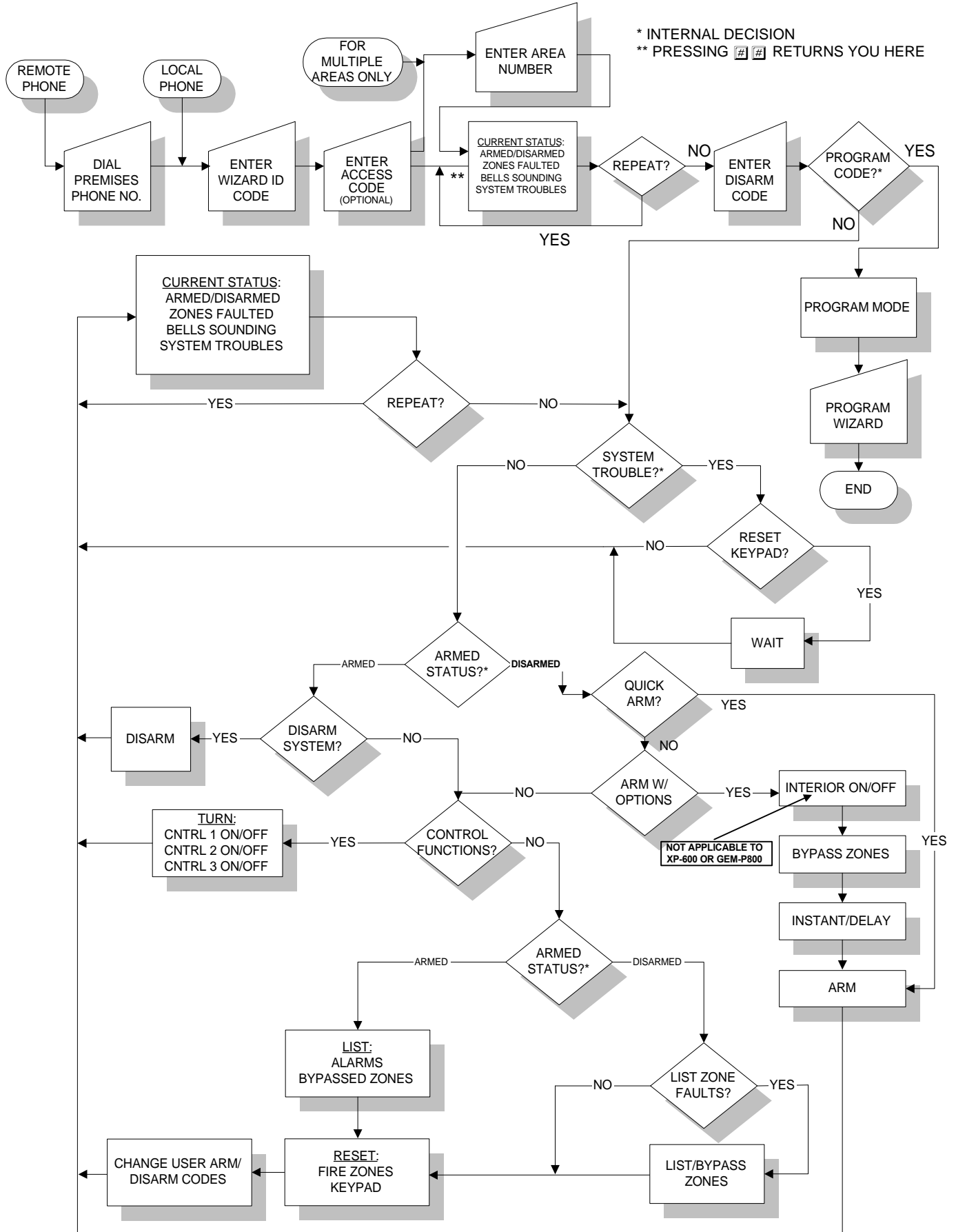
Following is a list of programmable descriptors that are stored in memory; each is identified by its three-digit number.

ACCOUNTING	001	FIFTY	045	PRIORITY	090	WING	134
AIRCONDITIONER	002	FIRE	046	PROTECTION	091	WORKSHOP	135
APARTMENT	003	FIRST	047	REAR	092	YARD	136
AREA	004	FIVE	048	REFRIGERATOR	093	Blank*	156
ATTIC	005	FLOOD	049	RELAY	094		
BABYS	006	FLOODING	050	RIGHT	095		
BASEMENT	007	FLOOR	051	ROOM	096		
BATH	008	FOIL	052	SAFE	097		
BATTERY	009	FORTY	058	SALES	098		
BED	010	FOUR	055	SECOND	100		
BELL	011	FOURTEEN	056	SECURE	103		
BOARD	012	FOURTH	057	SELECTED	106		
BOAT	013	FOYER	053	SEVEN	104		
BOILER	014	FRONT	054	SEVENTEEN	105		
BOYS	015	GARAGE	059	SEVENTH	108		
BROKEN	016	GATE	060	SEVENTY	107		
BUILDING	017	GIRLS	061	SHED	099		
BURNER	018	GLASS	062	SIGN	101		
CEILING	019	GREENHOUSE	063	SIX	102		
CLOSET	020	HIGH	064	SIXTEEN	109		
COMPUTER	021	HOOR	065	SIXTH	110		
CONTROL	022	INTERIOR	066	SIXTY	111		
DAUGHTER	023	KITCHEN	067	SKYLIGHT	112		
DAY	024	LEFT	068	SMOKE	113		
DEN	025	LIGHTS	069	SONS	114		
DEPARTMENT	026	LIVING	070	SOUTH	115		
DETECTOR	027	LOBBY	071	SPACE	116		
DINING	028	LOW	072	STAIRS	117		
DOOR	029	MAIDS	073	TEMPERATURE	118		
DOWN	138	MAIL	074	TEN	119		
DOWNSTAIRS	030	MASTER	075	THIRD	121		
EAST	031	MOTHERS	076	THIRTEEN	122		
EIGHT	033	NINE	078	THIRTY	128		
EIGHTEEN	034	NINETEEN	080	THREE	123		
EIGHTH	036	NINETY	079	TROUBLE	124		
EIGHTY	035	NINTH	077	TROUBLES	125		
ELEVEN	032	NORTH	081	TWELVE	120		
ENTRY	037	NUMBER	082	TWENTY	126		
EXECUTIVE	038	OFF	085	TWO	127		
EXIT	039	OFFICE	086	UP	137		
FAILURE	040	ON	083	UPSTAIRS	129		
FAMILY	041	ONE	084	UTILITY	130		
FATHERS	042	OPEN	087	WAREHOUSE	131		
FIFTEEN	043	PLAY	088	WEST	132		
FIFTH	044	PORCH	089	WINDOW	133		

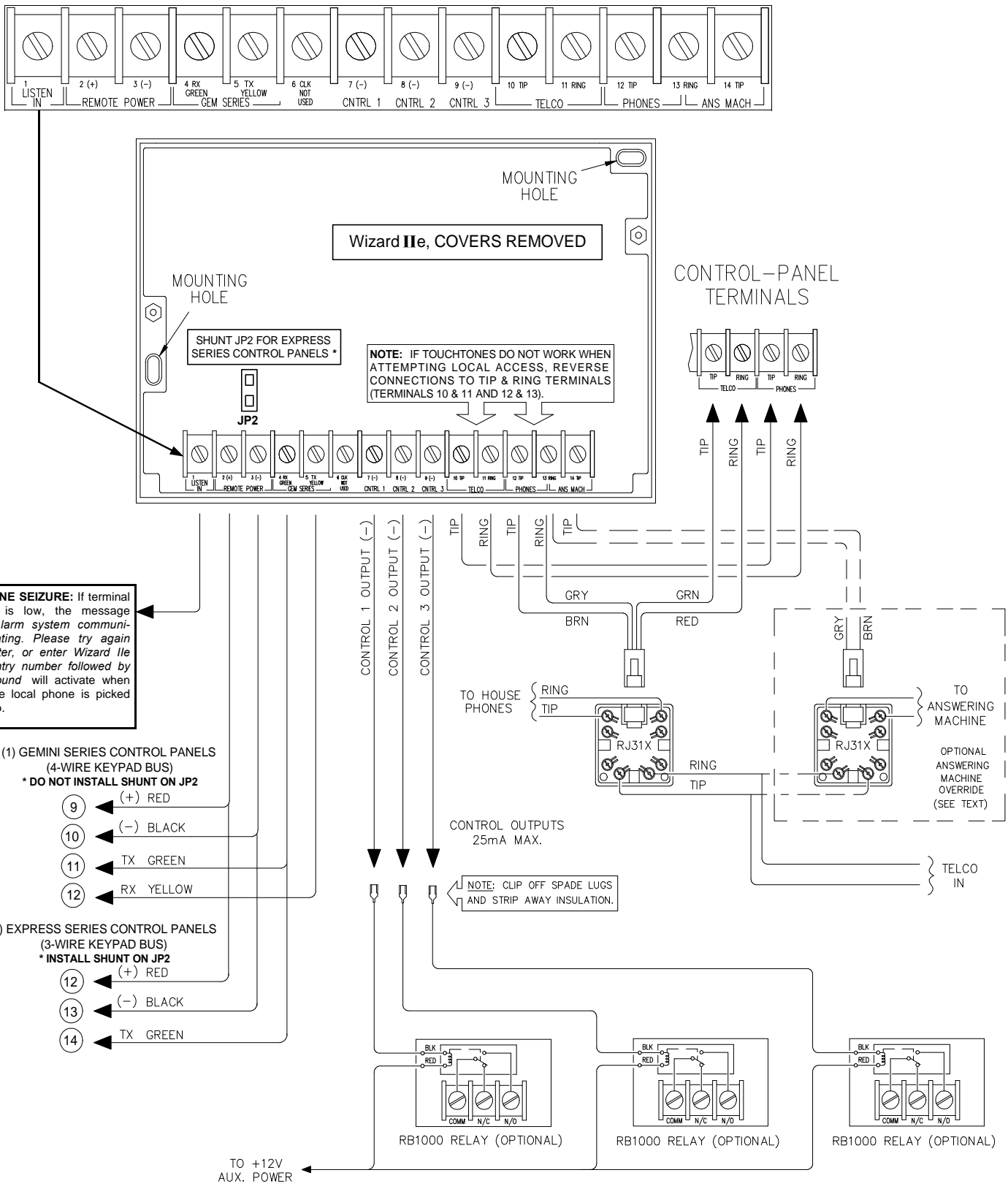
*To blank out a programmed Control-Output Description (Control 1, for example), enter . To blank out a programmed Zone Description (Zone 1, for example), enter .

CONDENSED FLOW CHART

* INTERNAL DECISION
 ** PRESSING [#] [#] RETURNS YOU HERE



WIZARD IIe WIRING DIAGRAM



LINE SEIZURE: If terminal 1 is low, the message *Alarm system communicating. Please try again later, or enter Wizard IIe entry number followed by pound* will activate when the local phone is picked up.

(1) GEMINI SERIES CONTROL PANELS (4-WIRE KEYPAD BUS)

- * DO NOT INSTALL SHUNT ON JP2
- 9 (+) RED
- 10 (-) BLACK
- 11 TX GREEN
- 12 RX YELLOW

(2) EXPRESS SERIES CONTROL PANELS (3-WIRE KEYPAD BUS)

- * INSTALL SHUNT ON JP2
- 12 (+) RED
- 13 (-) BLACK
- 14 TX GREEN

NOTES:

- (1) GEMINI SERIES INCLUDE THE FOLLOWING CONTROL PANELS: GEM-P1632, GEM-P3200, GEM-P9600, SS-P3200 & SS-P9600
- (2) EXPRESS SERIES INCLUDE THE FOLLOWING CONTROL PANELS: XP-400, XP-600, GEM-P400 & GEM-P800

WIZARD IIe PROGRAMMING WORKSHEET

ENTER PROGRAM MODE

- **From a Remote Telephone:** Dial the telephone number where Wizard is connected. When the Wizard or an Answering Machine automatically answers, go to step 1.
- **From a Local Telephone:** Pick up the telephone and go to step 1.

PROGRAMMING STEPS

1. Enter the Wizard ID Code (Default = 55) and press **#**.
2. Enter the Acces Code (Default = 000000), if programmed, and press **#**.
3. When prompted for the Disarm Code, enter the Program Code (Default = 999) and press **#**.
4. When asked if you wish to load the Default Program, press **#** for Yes or press ***** for No.
5. When asked to enter the next command line, enter the command line (see Code 1 below) and its associated data from these programming worksheets. To restart programming of any line press ***** *****.

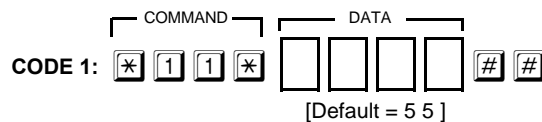
PROGRAMMING TIPS

- ☞ **To Read Existing Data:** Enter the Command Line only, then press **#**.
Example 1: To read existing Wizard ID Code, press ***** **1** **1** ***** **#**.
- ☞ **To Write New Data:** Enter the Command Line and Data, then press **#**.
Example 2: To write Wizard ID Code "1234", press ***** **1** **1** ***** **1** **2** **3** **4** **#**.
- ☞ **To Write and Read Back Data:** Enter The Command Line and Data, then press **#** *twice in rapid succession*.
Example 3: To write Wizard ID Code "1234" and read it back, press ***** **1** **1** ***** **1** **2** **3** **4** **#** **#**.
- ☞ DO NOT ATTEMPT TO PROGRAM ANY RESERVED LOCATIONS.
- ☞ IF NO ACTIVITY IS DETECTED WITHIN 30 SECONDS, THE WIZARD WILL HANG UP.

CODES

Code 1: Wizard ID Code

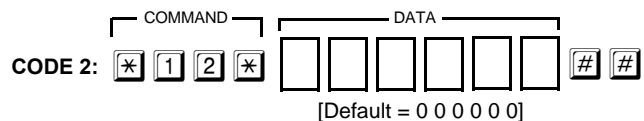
Enter up to 4 digits in blank boxes at right.



Code 2: Access Code

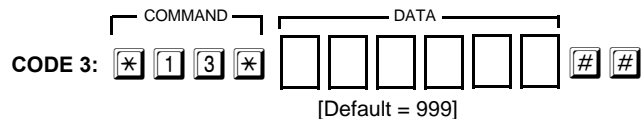
Enter up to 6 digits in blank boxes at right.

Note: Entering all zeros will disable Access Code.



Code 3: Program Code

Enter up to 6 digits in blank boxes at right.

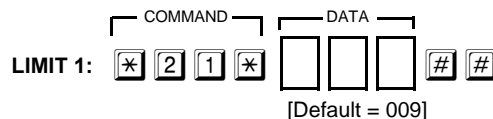


LIMITS

Limit 1: Number of Rings before Pickup

Enter 2 digits. Valid data is "01" through "15".

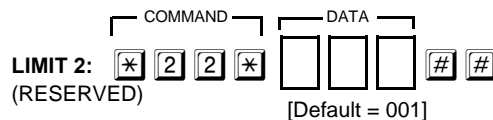
NOTE: Refer to Standalone Telephone Controller



Limit 2: Maximum Area Number

Enter 2 digits. Valid data is "01" through "08".

NOTE: For Express Series, (XP-400, XP-600, GEM-P400 and GEM-P800) program "001" in this location.



THE FOLLOWING STATEMENT IS REQUIRED BY THE FCC.

This equipment generates and uses radio-frequency energy and, if not installed and used properly, that is, in strict accordance with the manufacturer's instructions, may cause interference to radio and television reception. It has been type tested and found to comply with the limits for a Class-B computing device in accordance with the specifications in Subpart J of Part 15 of FCC Rules, which are designed to provide reasonable protection against such interference in a residential installation.

However, there is no guarantee that interference will not occur in a particular installation. If this equipment does cause interference to radio or television reception, which can be determined by turning the equipment off and on, the user is encouraged to try to correct the interference by one or more of the following measures: reorient the receiving antenna; relocate the computer with respect to the receiver; move the computer away from the receiver; plug the computer into a different outlet so that computer and receiver are on different branch circuits.

If necessary, the user should consult the dealer or an experienced radio/television technician for additional suggestions. The user may find the following booklet prepared by the Federal Communications Commission helpful: "How to Identify and Resolve Radio-TV Interference Problems." This booklet is available from the U.S. Government Printing Office, Washington, DC 20402; Stock No. 004-000-00345-4.

If a digital communicator is connected to a telephone line, do not notify the telephone company. It is no longer necessary to call the telephone company to notify it of the registration and ringer equivalence numbers of any telephone instrument being connected to the public switched telephone network. The telephone company will call and request this information if a need arises in the future.

RINGER EQUIVALENCE NUMBER

The FCC registration label, found on the printed-circuit board and on the bottom of your telephone sets, includes the ringer equivalence number

(REN). This is a representation of the electrical load that will be applied to your telephone line. This system has a ringer equivalence of zero. Therefore, it does not affect the load of the telephone company central office equipment when your telephones ring. The telephone line servicing your premises will not operate properly if the total ringer load exceeds the capability of the central office equipment. That is, if too many ringers are connected to the line, there may be insufficient energy to ring your telephones. If the ringer load is excessive, you may also have difficulty dialing telephone numbers.

If you want to know the total REN allowed for your telephone line, you may call your telephone company. However, as a rule of thumb, a total REN of five (5) should permit normal operation of your telephone sets and equipment. To determine the total ringer load, list the REN of each of your telephone sets or devices connected to your telephone line. Add these numbers; the result is the total REN for your line. If this number exceeds 5, you may want to consult your telephone company to determine whether or not proper operation of your equipment is possible.

RIGHTS OF THE TELEPHONE COMPANY

If your equipment causes harm to the telephone network, the telephone company may discontinue your service temporarily. If possible, they will notify you in advance. But if advance notice is not practical, you will be notified as soon as possible. You will be given the opportunity to correct the situation and you will be informed of your right to file a complaint with the FCC.

Your telephone company may make changes in its facilities, equipment, operations or procedures that could affect the proper function of your communicator. If they do, you will be notified in advance to give you an opportunity to maintain uninterrupted service.

NOTES

NAPCO LIMITED WARRANTY

NAPCO SECURITY SYSTEMS, INC. (NAPCO) warrants its products to be free from manufacturing defects in materials and workmanship for *thirty-six months* following the date of manufacture. NAPCO will, within said period, at its option, repair or replace any product failing to operate correctly without charge to the original purchaser or user.

This warranty shall not apply to any equipment, or any part thereof, which has been repaired by others, improperly installed, improperly used, abused, altered, damaged, subjected to acts of God, or on which any serial numbers have been altered, defaced or removed. Seller will not be responsible for any dismantling or reinstallation charges.

THERE ARE NO WARRANTIES, EXPRESS OR IMPLIED, WHICH EXTEND BEYOND THE DESCRIPTION ON THE FACE HEREOF. THERE IS NO EXPRESS OR IMPLIED WARRANTY OF MERCHANTABILITY OR A WARRANTY OF FITNESS FOR A PARTICULAR PURPOSE. ADDITIONALLY, THIS WARRANTY IS IN LIEU OF ALL OTHER OBLIGATIONS OR LIABILITIES ON THE PART OF NAPCO.

Any action for breach of warranty, including but not limited to any implied warranty of merchantability, must be brought within the six months following the end of the warranty period. IN NO CASE SHALL NAPCO BE LIABLE TO ANYONE FOR ANY CONSEQUENTIAL OR INCIDENTAL DAMAGES FOR BREACH OF THIS OR ANY OTHER WARRANTY, EXPRESS OR IMPLIED, EVEN IF THE LOSS OR DAMAGE IS CAUSED BY THE SELLER'S OWN NEGLIGENCE OR FAULT.

In case of defect, contact the security professional who installed and maintains your security system. In order to exercise the warranty, the product must be returned by the security professional, shipping costs prepaid and insured to NAPCO. After repair or replacement, NAPCO assumes the cost of returning products under warranty. NAPCO shall have no obligation under this warranty, or otherwise, if the product has been repaired by others, improperly installed, improperly used, abused, altered, damaged, subjected to accident, nuisance, flood, fire or acts of God, or on which any serial numbers have been altered, defaced or removed. NAPCO will not be responsible for any dismantling, reassembly or reinstallation charges.

This warranty contains the entire warranty. It is the sole warranty and any prior agreements or representations, whether oral or written, are either merged herein or are expressly cancelled. NAPCO neither assumes, nor authorizes any other person purporting to act on its behalf to modify, to change, or to assume for it, any other warranty or liability concerning its products.

In no event shall NAPCO be liable for an amount in excess of NAPCO's original selling price of the product, for any loss or damage, whether direct, indirect, incidental, consequential, or otherwise arising out of any failure of the product. Seller's warranty, as hereinabove set forth, shall not be enlarged, diminished or affected by

and no obligation or liability shall arise or grow out of Seller's rendering of technical advice or service in connection with Buyer's order of the goods furnished hereunder.

NAPCO RECOMMENDS THAT THE ENTIRE SYSTEM BE COMPLETELY TESTED WEEKLY.

Warning: Despite frequent testing, and due to, but not limited to, any or all of the following; criminal tampering, electrical or communications disruption, it is possible for the system to fail to perform as expected. NAPCO does not represent that the product/system may not be compromised or circumvented; or that the product or system will prevent any personal injury or property loss by burglary, robbery, fire or otherwise; nor that the product or system will in all cases provide adequate warning or protection. A properly installed and maintained alarm may only reduce risk of burglary, robbery, fire or otherwise but it is not insurance or a guarantee that these events will not occur. CONSEQUENTLY, SELLER SHALL HAVE NO LIABILITY FOR ANY PERSONAL INJURY, PROPERTY DAMAGE, OR OTHER LOSS BASED ON A CLAIM THE PRODUCT FAILED TO GIVE WARNING. Therefore, the installer should in turn advise the consumer to take any and all precautions for his or her safety including, but not limited to, fleeing the premises and calling police or fire department, in order to mitigate the possibilities of harm and/or damage.

NAPCO is not an insurer of either the property or safety of the user's family or employees, and limits its liability for any loss or damage including incidental or consequential damages to NAPCO's original selling price of the product regardless of the cause of such loss or damage.

Some states do not allow limitations on how long an implied warranty lasts or do not allow the exclusion or limitation of incidental or consequential damages, or differentiate in their treatment of limitations of liability for ordinary or gross negligence, so the above limitations or exclusions may not apply to you. This Warranty gives you specific legal rights and you may also have other rights which vary from state to state.